

Welcome

- ▶ Welcome Parents to the 2025-26 Glenlake Minor Hockey Evaluation Process.
- ▶ **Objective:** Overview of the process and answer your questions.



Overview and Agenda

- ▶ Expectations of Parents and Players.
- ▶ Overview of the evaluation process.
- ▶ How to get involved
- ▶ Questions



Understanding Parent Expectations

- ▶ RESPECT THE VOLUNTEERS
- ▶ Parents should support their child's hockey journey
- ▶ Encourage players to focus on personal growth
- ▶ Understand that evaluations are a snapshot
- ▶ Promote a positive environment for all participants



Player Expectations



Players must earn
their spot



Snapshot evaluation -
not a forecast



“Bell Curve” is
normal- most players
are in the middle



Contact Age Group
Coordinator for
questions

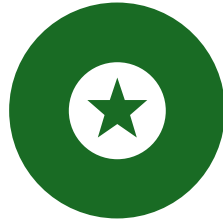
Goals of the Evaluation Process

Place	Place players based on current skill level
Create	Create balanced, competitive teams
Promote	Promote fun, development, and fair opportunity
Encourage	Encourage love of the game

Evaluations Committee



CONSISTS OF
6 MEMBERS



EVALUATIONS
COMMITTEE DOES
NOT EVALUATE



NO MEMBER CAN
WORK ON EVALUATION
DATA ALONE



DECISION RECORDS,
DATA CHECKS AND
AUDITS ARE USED



COMMITTEE DECISIONS
ARE MADE BY THE
ENTIRE GROUP

Glenlake Hockey												
2019/20 (Age Group insert) Evaluations												
ALL SKATERS												
MACRO SORT												
Session Number:				Considerations								
Group:												
				Skating		Puck Control	Passing	Shooting	Positioning	Competence	Hockey Sense	200 Feet
Pinnie #	Pinnie Color	Top Tier	Middle Tier	Bottom Tier	Fwd	Bkw						

Glenlake Hockey												
2025 Evaluations												
Forwards/Defense												
MICRO SORT												
Session Number:				Considerations								
Group:												
				Skating		Puck Control	Passing	Shooting	Positioning	Competence	Hockey Sense	200 Feet
Pinnie #	Pinnie Color	Top Tier (5 pts)	Next to Top Tier (4 pts)	Middle Tier (3 pts)	Next to Bottom Tier (2 pts)	Bottom Tier (1 pt)	Fwd	Bkw				

Evaluator Responsibilities

- ▶ Evaluators must provide objective and fair assessments.
- ▶ Evaluators should not communicate with players or parents at ANYTIME during evaluations.
- ▶ Evaluators must adhere to the established evaluation criteria.
- ▶ Maintaining confidentiality of scores and evaluations is crucial.
- ▶ Continuous feedback helps improve the evaluation process.

Player Movement

- ▶ Group skate times will not be posted in advance
- ▶ Players after each session can move
- ▶ This year groups will be staggered even and odd groups so that ability for skaters to move quicker
 - ▶ Example:
 - ▶ Group 5- Player skated on Tuesday and finished at the top of their group. As a result, they skated with Group 4 on Wednesday.
- ▶ If you don't skate you don't move, unless absence is approved by Evaluations committee.

Missed Sessions & Provisional Placement



Full attendance ensures fair evaluation



Missed sessions = no movement (unless approved absence)



Committee decides on provisional placements



1-month adjustment period allowed

Player Movement Chart (“PMC”)

▶ What is the PMC?

- ▶ A guide used to determine how many players move to the next higher evaluation group
- ▶ Designed to help group players by similar skill level based on evaluator scores

▶ How it works:

- ▶ Evaluator scores are compiled after each session
- ▶ Players are ranked and movement decisions are made using the PMC as a reference
- ▶ Movement occurs between sessions

		Group 1		Group 2		Group 3		Group 4		Group 5		Group 6		Group 7		Group 8		Group 9	
Session 2	Begin																		
	Move			27	0	36	10	26	8	28	9	27	36	12	24	37	10	27	
Session 3	Result			37		34			37		39		33		26				
	Move			27	10	25	9		28	9	27	12	25	8	26				
Session 4	Result	27		35		37		36		37		34							
	Move		27	7	28	8	29	8	28	8	29	8	26						
Session 5	Result	34		36		37		36		37		26							
	Move																		

PMC - Guidelines & Considerations

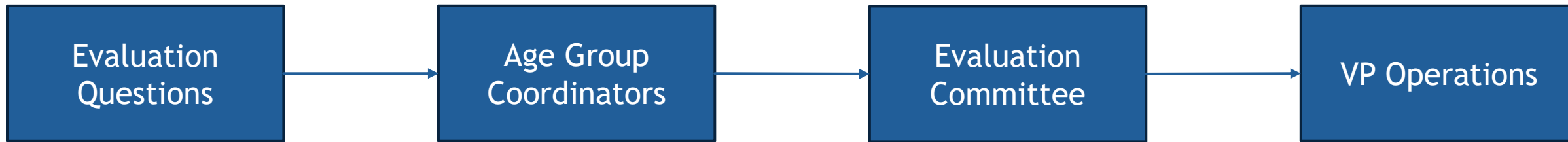
- ▶ For fairness and progression tracking
- ▶ Players are not guaranteed to return to the same team level as prior years — placements are earned each year
- ▶ Group sizes and movement numbers vary by age group and session
- ▶ The PMC is a flexible guide — the Evaluation Committee has final authority
- ▶ All movement decisions must be supported by evaluator data and documented

		Group 1		Group 2		Group 3		Group 4		Group 5		Group 6		Group 7		Group 8		Group 9	
Session 2	Begin			27		36		36		36		36		37					
	Move			27	0	10	26	8	28	9	27	12	24	10	27				
Session 3	Result			37		34		37		39		33		26					
	Move			27	10	25	9	28	9	27	12	25	8	26					
Session 4	Result	27		35		37		36		37		34							
	Move		27	7	28	8	29	8	28	8	29	8	26						
Session 5	Result	34		36		37		36		37		26							
	Move																		

- ▶ Be an evaluator, helper, or timekeeper
- ▶ Volunteers make this process work
- ▶ Training provided

How to Get Involved

Questions During Evaluations - Communication Process



- ▶ Review the Evaluation Policy & FAQs
- ▶ Speak to the Age Group Coordinators (informal request)
- ▶ Communicate with the Evaluation Committee (formal request)
- ▶ If concerns cannot be resolved, the next step is to speak to the VP Operations
- ▶ All communication **MUST** be done via email. Do not call or text the evaluation committee!

Questions & Contacts



Open Q&A



Contact your Age Group Coordinator



Visit Glenlake website for details

ADDITIONAL INFORMATION

- ▶ Key Principles
- ▶ Structure of Evaluators
- ▶ Evaluation Format
- ▶ Timed Drills
- ▶ Macro v. Micro Sorts
- ▶ Team Genius
- ▶ Data Review Policy

Key Evaluation Principles



FAIR, UNBIASED,
AND TRANSPARENT



ALIGNS WITH
HOCKEY CALGARY
STANDARDS



EVALUATIONS
REFLECT CURRENT
PERFORMANCE



COMMITTEE
DECISIONS ARE
FINAL

Evaluator Structure

- ▶ Evaluators are independent from age group
- ▶ Mix of coaches & experienced hockey individuals
- ▶ Team Genius used for consistent scoring
- ▶ Limit non-parent coaches to 1 sheet per session

Age Group Evaluation Format

U7 - 1 skating session

U9 - 5-6 sessions (timed drills, skills, scrimmages)

U11/U13 - 5-6 sessions (timed drills, scrimmages)

U15/U18 - 4 sessions (scrimmages)

Goalies - Evaluated separately by third party

Timed Drills



3rd-party timed drills for U9-U13



Initial seeding only - results not carried forward

Scrimmages



Shifts are set for 75 seconds at all age categories to allow for transition



Each session is evaluated independently. Work hard each ice time!

Macro vs. Micro Sorts



Macro Sort: Early sessions, group by similar skill



Micro Sort: Final 2 scrimmages, player ranking



Movement is generally upward only

Team Genius



Software used for communication and scoring



Scoring entry is password protected, and each score is assigned to evaluator



Data entry cannot be input by a parent of player in age group



Scores are locked after each session

Data Review Policy



\$300 fee for individual data review



Only the requesting player's data reviewed



Decisions are final