



**GLENLAKE**  
MINOR HOCKEY CLUB

# Parent Information Meeting

2019/20 Season



# **GLENLAKE**

## **MINOR HOCKEY CLUB**

**Welcome**

**Mission and Goals of Process**

**Evaluation Process**

**Role of the Age Group Coordinator**

**Player/ Parent Expectations**

**Questions and Answers**



# GLENLAKE

## MINOR HOCKEY CLUB

## Welcome

- Welcome parents:
  - New to hockey
  - New to Glenlake
  - Returning
- Introduce Evaluation Chairs:
  - Twila McCallum
  - Ryan Arsenault
  - Brian Keeler

### Objective:

- Provide an overview of the Evaluation process and answer questions



# **GLENLAKE**

## **MINOR HOCKEY CLUB**

**Welcome**

**Mission and Goals of Process**

**Evaluation Process**

**Role of the Age Group Coordinator**

**Player/ Parent Expectations**

**Questions and Answers**



**GLENLAKE**  
MINOR HOCKEY CLUB

## Mission and Goals of Process

- Get the right players on the right teams
- Group similar skill levels together
- Enable players to contribute – everyone gets time with the puck
- Goal - HAVE FUN!!





# **GLENLAKE**

## **MINOR HOCKEY CLUB**

**Welcome**

**Mission and Goals of Process**

**Evaluation Process**

**Role of the Age Group Coordinator**

**Player/ Parent Expectations**

**Questions and Answers**



# GLENLAKE

MINOR HOCKEY CLUB

Timbits

Goalies

Novice

Atom

Peewee

Bantam

Midget



**GLENLAKE**  
MINOR HOCKEY CLUB

## Timbits

- Goal is to have balanced teams
- Players will have one on-ice session
- Basic drills will be run to assess skill
- No scrimmages will take place
- Evaluators are on ice sorting players

Timbit Coordinator: Brian Hollingshead





# GLENLAKE

MINOR HOCKEY CLUB

## Goalies

- Evaluations are executed by 3rd party
- Goalie specific camps will be run prior to evaluations
- Skill sessions will be Goalie specific
- Goalie will join the age group players for scrimmages

Goalie Coordinator: Angus Cooke



**GLENLAKE**  
MINOR HOCKEY CLUB

## Age Group Coordinators

Your age group coordinator will be your primary contact during evaluations

Novice - Rob Krasilowez ([novice@glenlakehockey.com](mailto:novice@glenlakehockey.com))

Atom - Doug Hamilton ([atom@glenlakehockey.com](mailto:atom@glenlakehockey.com))

PW - Kristi Clements ([peewee@glenlakehockey.com](mailto:peewee@glenlakehockey.com))

Bantam - Tom Graham ([bantam@glenlakehockey.com](mailto:bantam@glenlakehockey.com))

Midget Geoff Vanderburg ([midget@glenlakehockey.com](mailto:midget@glenlakehockey.com))



# GLENLAKE

MINOR HOCKEY CLUB

## Timed-Drill Sessions – Novice, Atom and PeeWee

- We will continue with the process of initial seeding based on timed drills for Novice, Atom and Pee Wee
- Timed drills replace skills evaluation session # 1
- Results used to determine players starting grid position
- Basic forward/backward drills with and without pucks are posted on the Glenlake website
- Timed drills results will not carry over to the remainder of the evaluation process

3<sup>rd</sup> Party Supplier: Fuel Performance Testing



# GLENLAKE

MINOR HOCKEY CLUB

## Changes for 2019/20 evaluation season

- Team Genius - Automating the process / Data flow will be used again this evaluation season
- Novice – based on Hockey Alberta's direction, 1st and 2nd year players will evaluate together
- Timed drills continue for Novice, Atom and PeeWee.

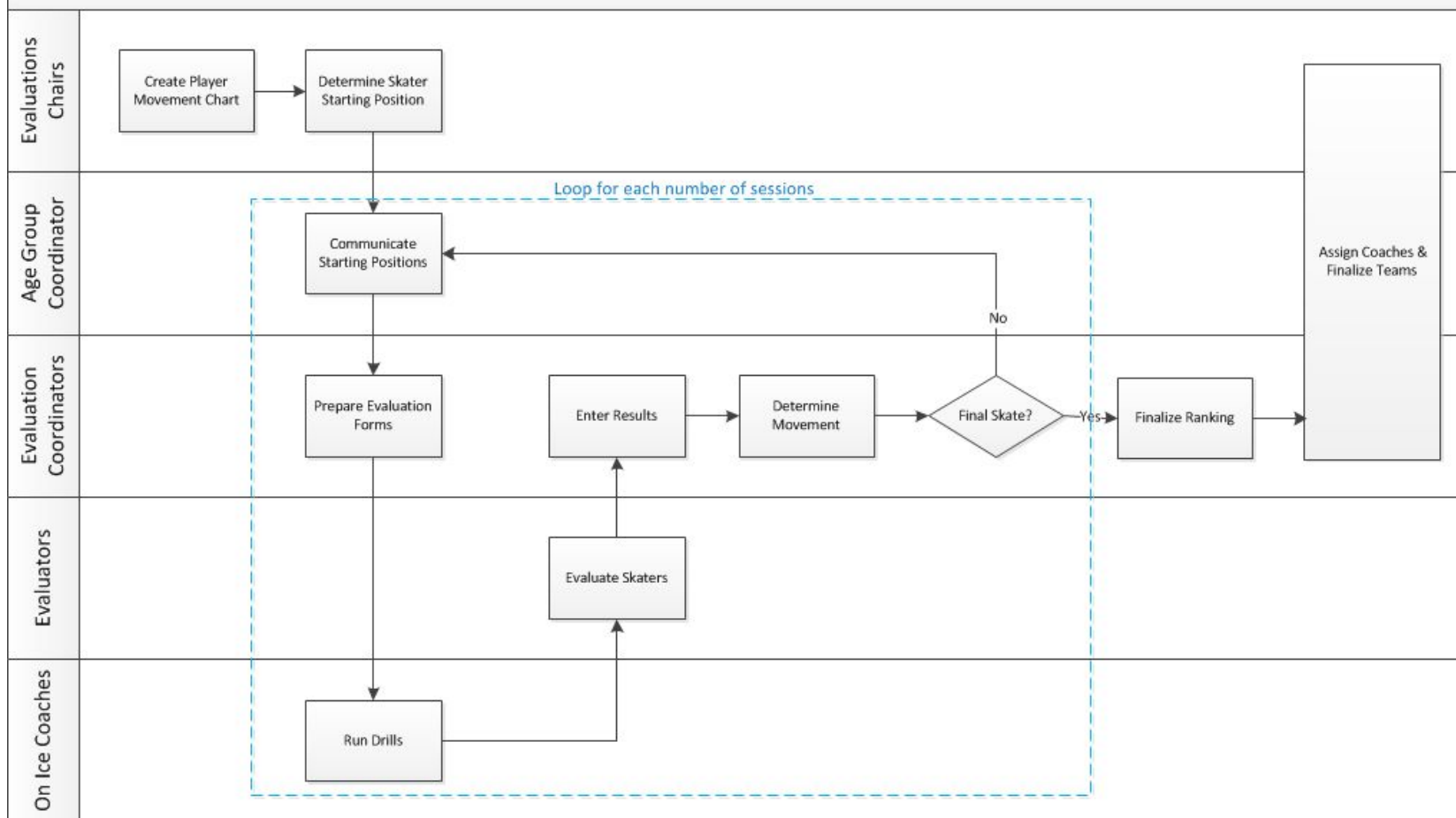




# GLENLAKE

## MINOR HOCKEY CLUB

Evaluation High-level Process Flow



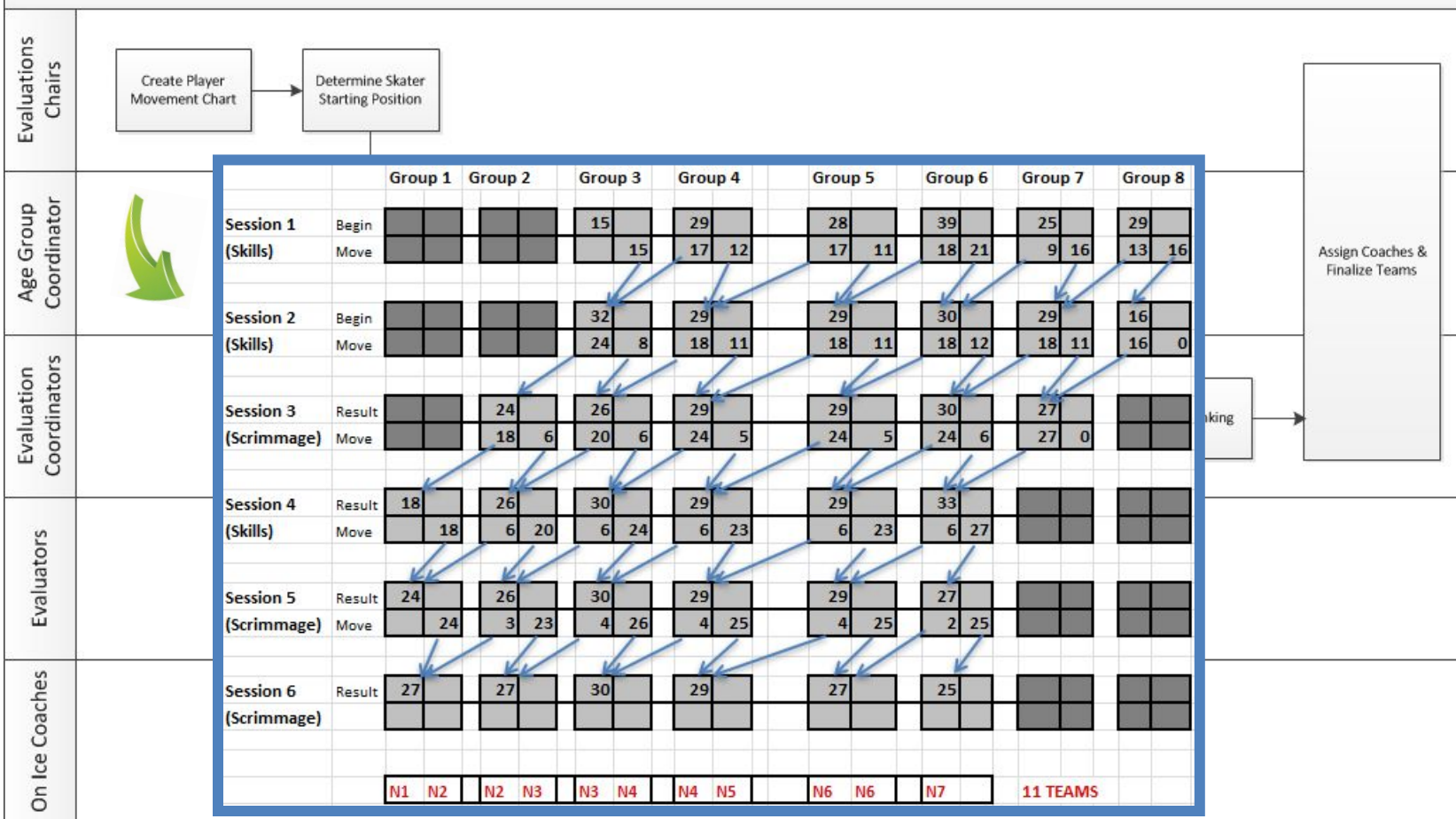


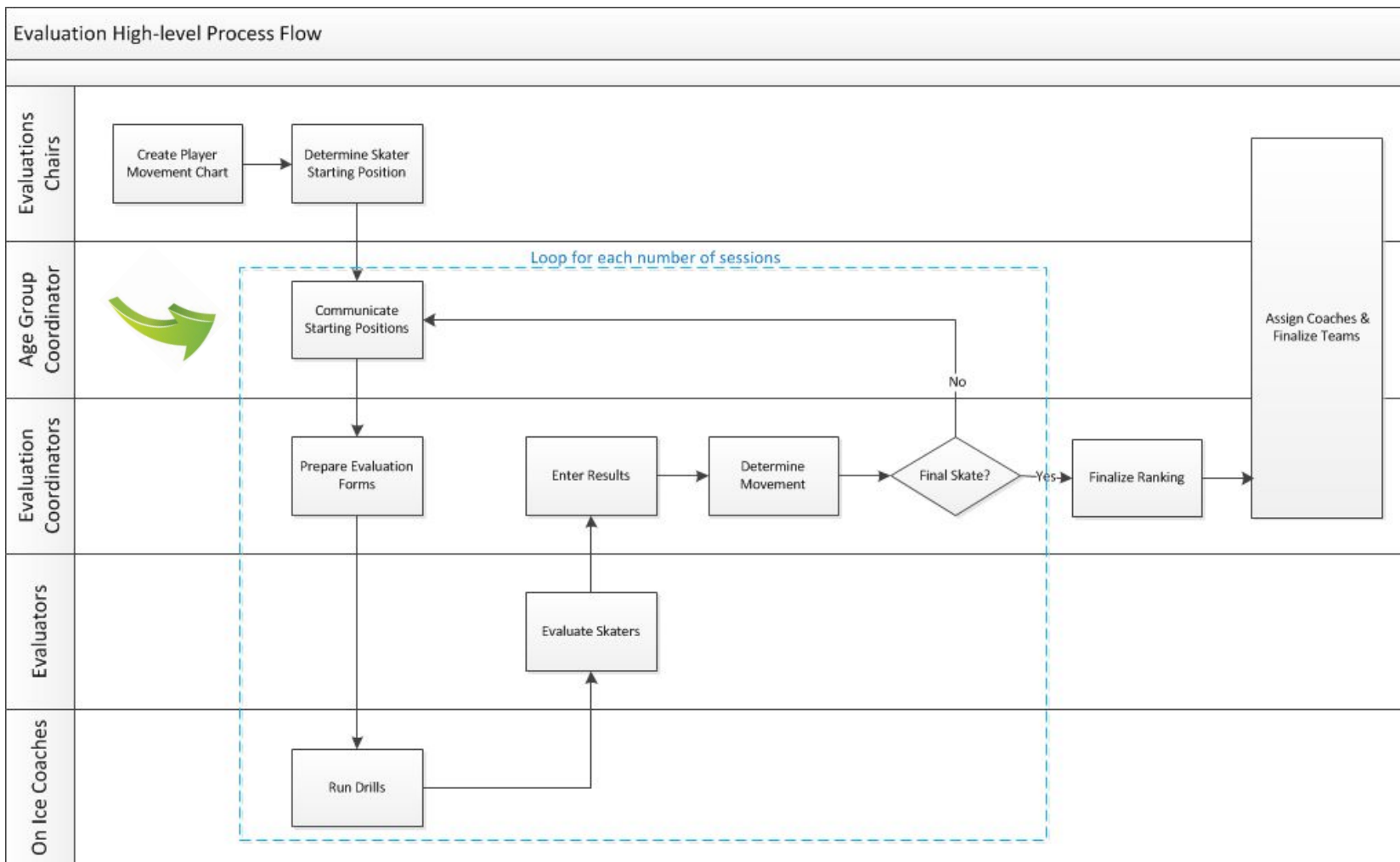


# GLENLAKE

## MINOR HOCKEY CLUB

### Evaluation High-level Process Flow



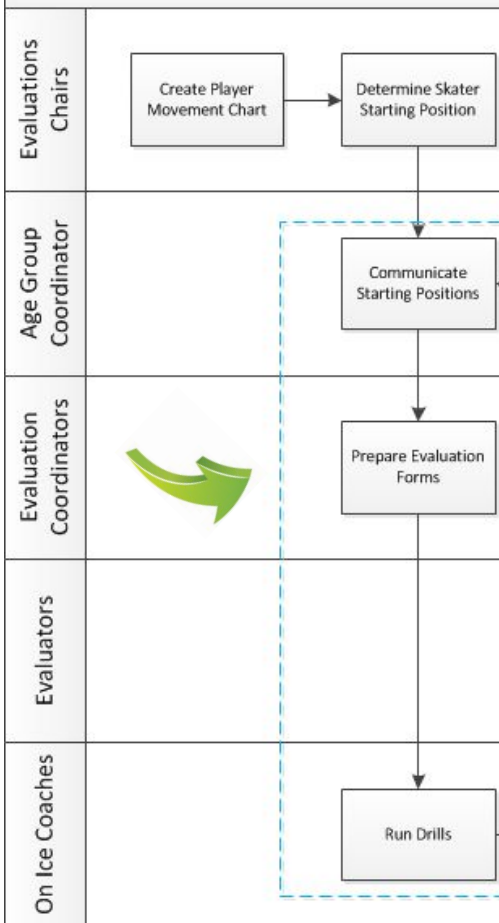




# GLENLAKE

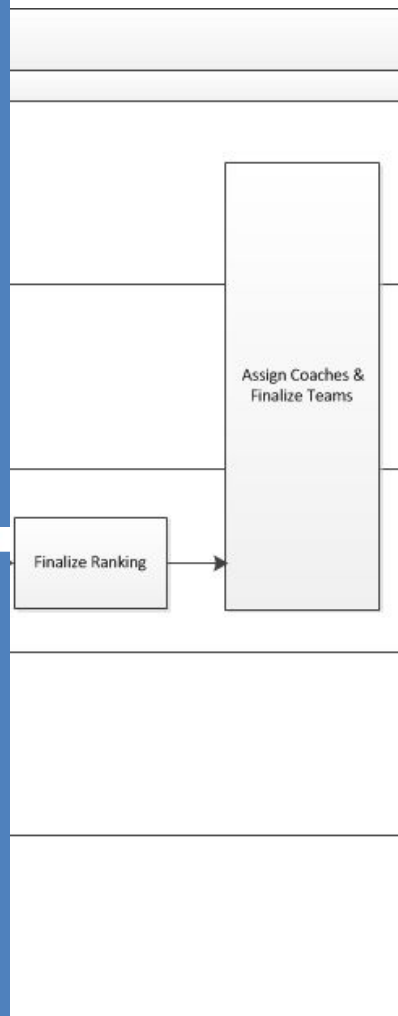
## MINOR HOCKEY CLUB

### Evaluation High-level Process Flow



Glenlake Hockey <YYYY> <Division> Evaluations ALL SKATERS													
MACRO SORT													
Session Number:		Considerations											
Group:													
Pinnie #	Pinnie Color	Evaluation			Fwd	Skating	Puck Control	Passing	Shooting	Position	Compete	Hockey Sense	200 Feet
		Top Tier	Middle Tier	Bottom Tier									
1													
2													
3													
4													
5													
6													
7													
8													
9													
10													
11													
12													
13													
14													
15													
16													
17													
18													
19													
20													
21													
22													
23													
24													

Glenlake Hockey <YYYY> <Division> Evaluations ALL SKATERS																	
MICRO SORT																	
Session Number:																	
Group:																	
		Evaluation					Considerations							Comments			
Pinnie #	Pinnie Color	Top Tier	Next to Top	Middle Tier	Next to Bottom	Bottom Tier	Fwd Eval	Skating Eval	Puck Control	Passing	Shooting	Position	Compete		Hockey Sense	200 Feet	
1																	
2																	
3																	
4																	
5																	
6																	
7																	
8																	
9																	
10																	
11																	
12																	
13																	
14																	
15																	
16																	
17																	
18																	
19																	
20																	
21																	
22																	
23																	
24																	



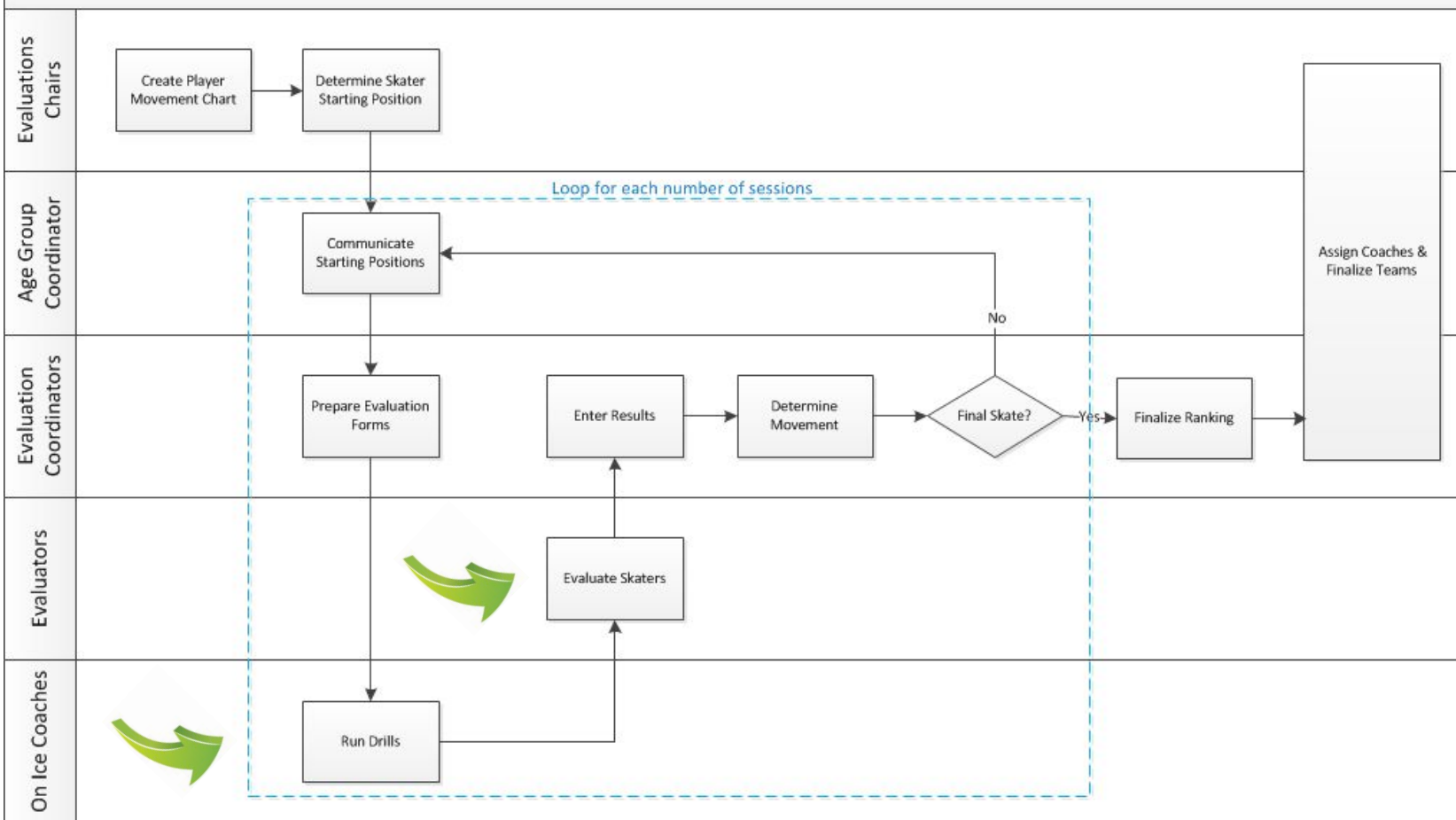




# GLENLAKE

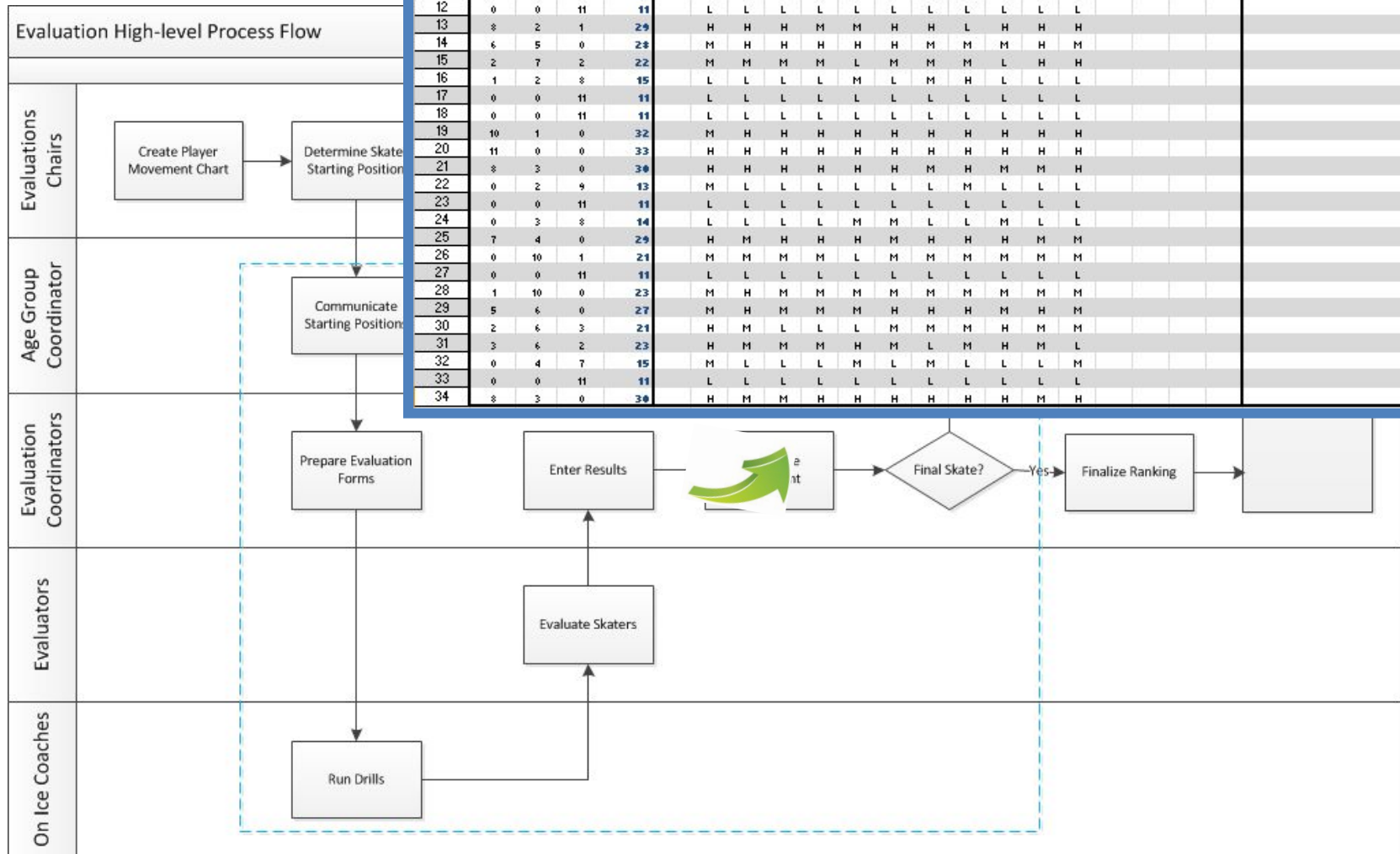
## MINOR HOCKEY CLUB

Evaluation High-level Process Flow

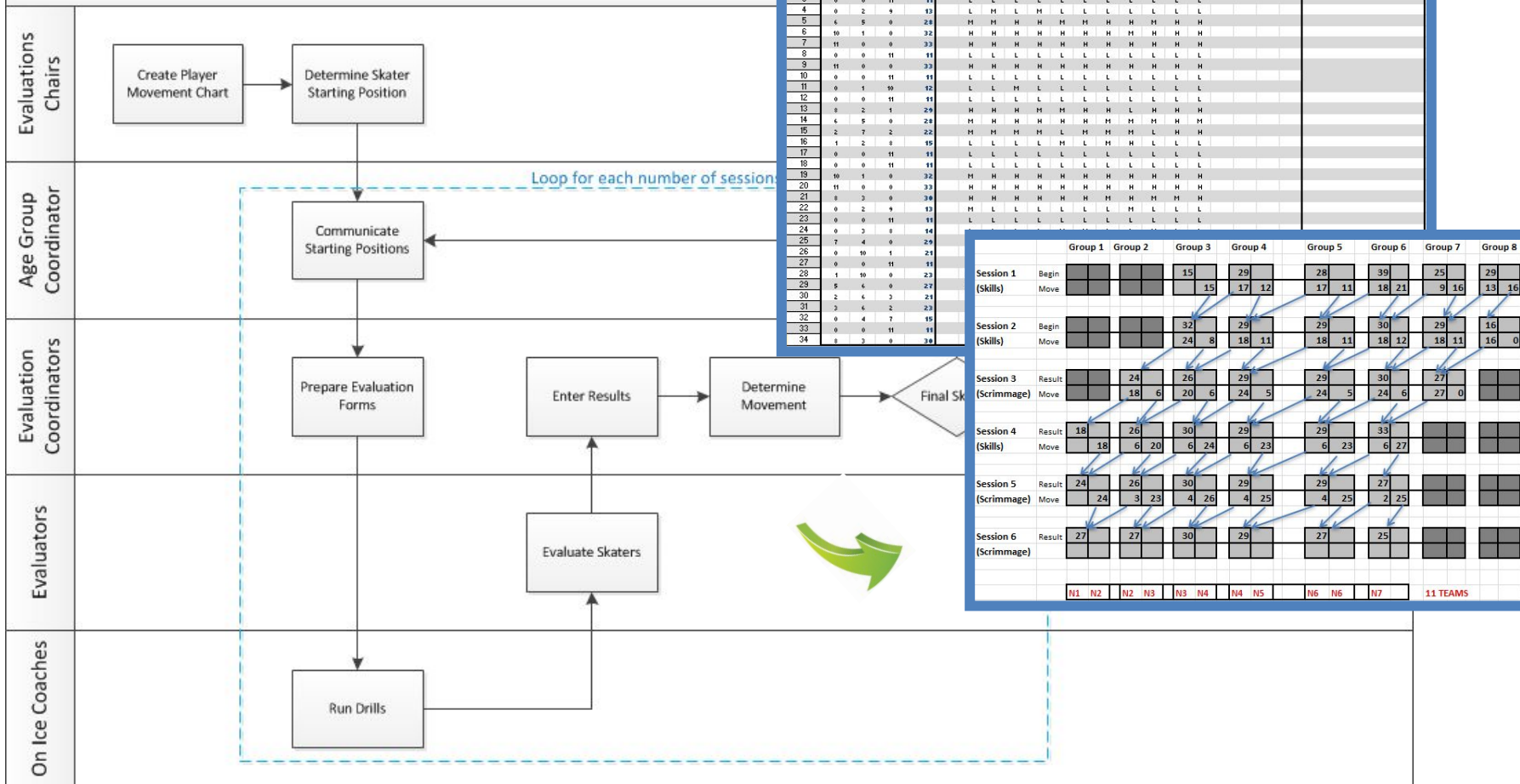




Pinnio #	Rank			Total Score	Evaluatorz														Notes
	High	Med	Low		John Doe	John Doe	John Doe	John Doe	John Doe	John Doe	John Doe	John Doe	John Doe	John Doe	John Doe	John Doe	John Doe	John Doe	
1	0	10	1	21	L	M	M	M	M	M	M	M	M	M	M				
2	0	6	5	17	L	L	M	M	M	L	L	L	M	M	M				
3	0	0	11	11	L	L	L	L	L	L	L	L	L	L	L				
4	0	2	9	13	L	M	L	M	L	L	L	L	L	L	L				
5	6	5	0	28	M	M	H	H	M	M	H	H	M	H	H				
6	10	1	0	32	H	H	H	H	H	H	H	M	H	H	H				
7	11	0	0	33	H	H	H	H	H	H	H	H	H	H	H				
8	0	0	11	11	L	L	L	L	L	L	L	L	L	L	L				
9	11	0	0	33	H	H	H	H	H	H	H	H	H	H	H				
10	0	0	11	11	L	L	L	L	L	L	L	L	L	L	L				
11	0	1	10	12	L	L	M	L	L	L	L	L	L	L	L				
12	0	0	11	11	L	L	L	L	L	L	L	L	L	L	L				
13	8	2	1	29	H	H	H	M	M	H	H	L	H	H	H				
14	6	5	0	28	M	H	H	H	H	M	M	M	M	H	M				
15	2	7	2	22	M	M	M	M	L	M	M	M	L	H	H				
16	1	2	8	15	L	L	L	L	M	L	M	H	L	L	L				
17	0	0	11	11	L	L	L	L	L	L	L	L	L	L	L				
18	0	0	11	11	L	L	L	L	L	L	L	L	L	L	L				
19	10	1	0	32	M	H	H	H	H	H	H	H	H	H	H				
20	11	0	0	33	H	H	H	H	H	H	H	H	H	H	H				
21	8	3	0	30	H	H	H	H	H	M	H	M	M	H	M				
22	0	2	9	13	M	L	L	L	L	L	L	M	L	L	L				
23	0	0	11	11	L	L	L	L	L	L	L	L	L	L	L				
24	0	3	8	14	L	L	L	L	M	M	L	L	M	L	M				
25	7	4	0	29	H	M	H	H	H	M	H	H	H	M	M				
26	0	10	1	21	M	M	M	M	L	M	M	M	M	M	M				
27	0	0	11	11	L	L	L	L	L	L	L	L	L	L	L				
28	1	10	0	23	M	H	M	M	M	M	M	M	M	M	M				
29	5	6	0	27	M	H	M	M	M	H	H	H	M	H	M				
30	2	6	3	21	H	M	L	L	L	M	M	M	H	M	M				
31	3	6	2	23	H	M	M	M	H	M	L	M	H	M	L				
32	0	4	7	15	M	L	L	L	M	L	M	L	L	L	M				
33	0	0	11	11	L	L	L	L	L	L	L	L	L	L	L				
34	8	3	0	30	H	M	M	H	H	H	H	H	H	M	H				





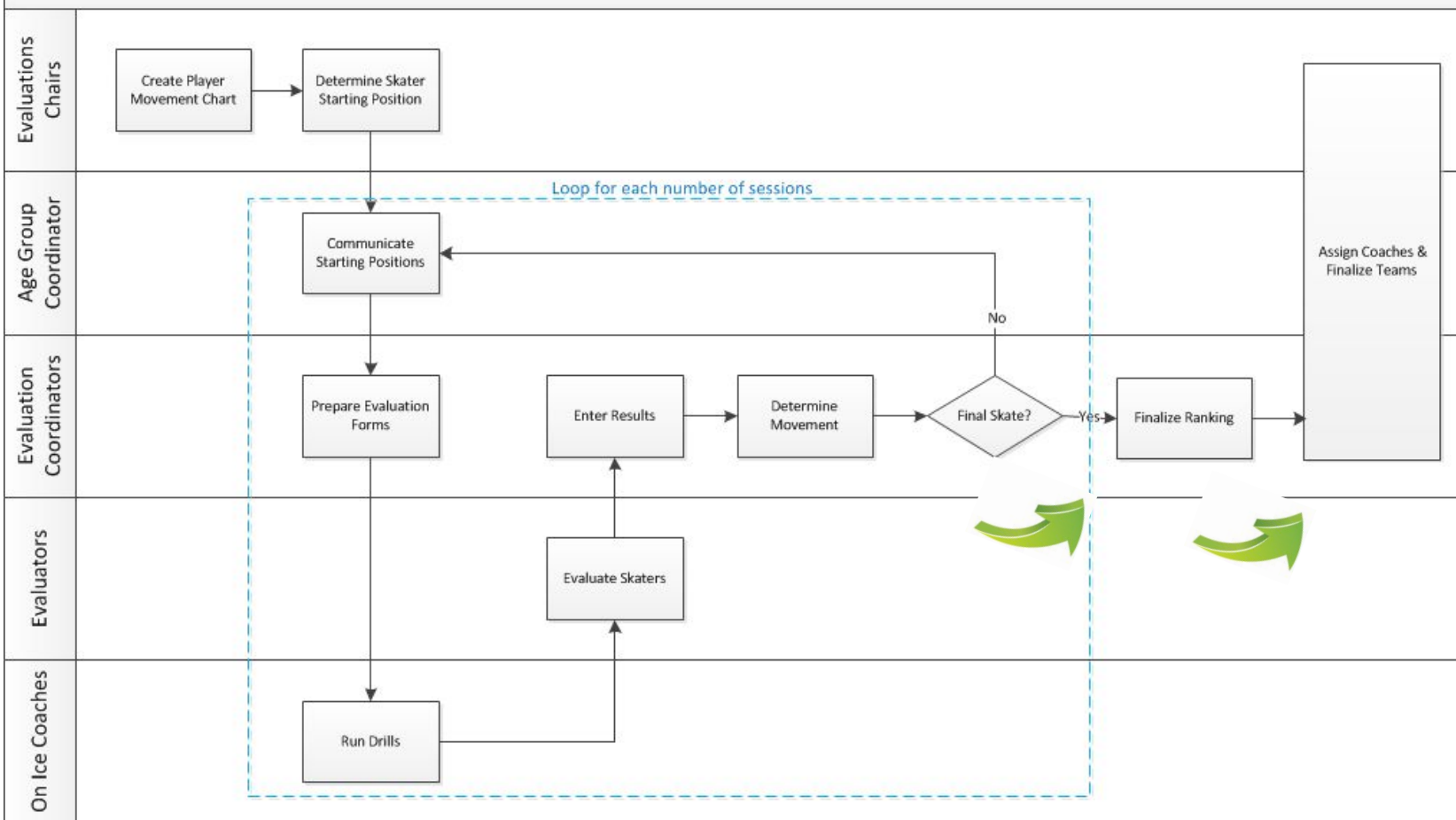




# GLENLAKE

## MINOR HOCKEY CLUB

Evaluation High-level Process Flow





# GLENLAKE

## MINOR HOCKEY CLUB

## Division of Duties

Evaluations Chairs	<< Establish Policy & Make Policy Decisions
Age Group Coordinator	<< Communicate Sessions and Teams
Evaluation Coordinators	<< Calculate Results
Evaluators	<< Evaluate Performance
On Ice Coaches	<< Run Drills/Benches



# **GLENLAKE**

## **MINOR HOCKEY CLUB**

**Welcome**

**Mission and Goals of Process**

**Evaluation Process**

**Role of the Age Group Coordinator**

**Player/ Parent Expectations**

**Questions and Answers**





**GLENLAKE**  
MINOR HOCKEY CLUB

## Role of the Age Group Coordinator

- Primary point of contact for Parents
  - Communicate initial placement, movements and team assignment
- Coordinate on-ice logistics
  - Pinnie assignment
  - Volunteers for scrimmages
  - Shooters for goalie specific sessions





# **GLENLAKE**

## **MINOR HOCKEY CLUB**

**Welcome**

**Mission and Goals of Process**

**Evaluation Process**

**Role of the Age Group Coordinator**

**Player/ Parent Expectations**

**Questions and Answers**



**GLENLAKE**  
MINOR HOCKEY CLUB

## Player/ Parent Expectations

- Players are responsible for their performance – they must earn their spot
- We can't force players to “perform”
- Evaluations are a snapshot analysis – not a forecast of potential
- Strong February performance can be result of many factors
  - Coaching
  - Personal commitment
  - teammates

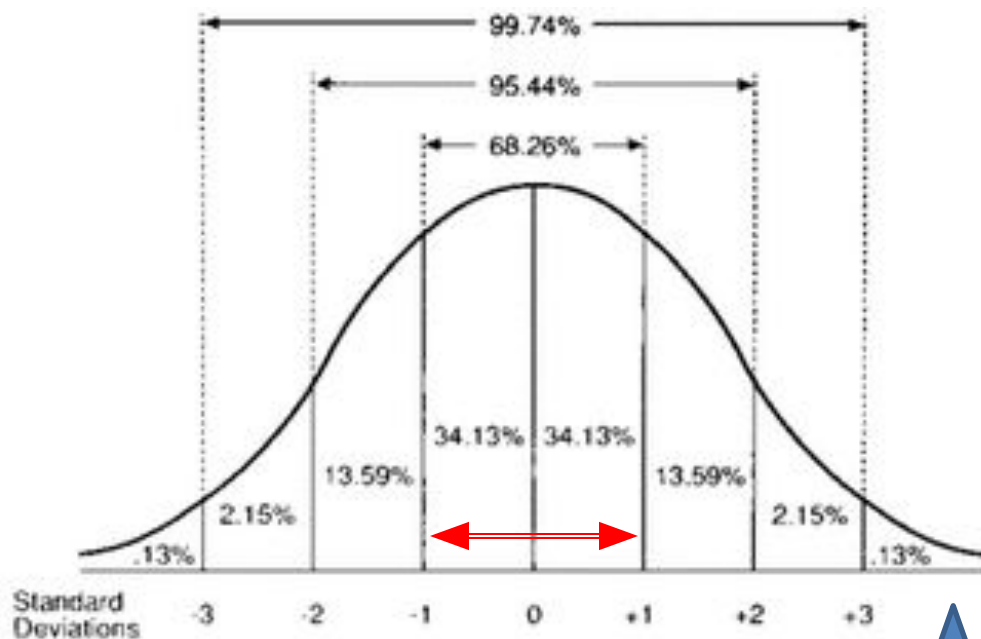


# GLENLAKE

## MINOR HOCKEY CLUB

### Player/ Parent Expectations (continue)

- The Bell Curve Effect



208 PW Players = 1   4   28   142   28   4





# GLENLAKE

MINOR HOCKEY CLUB

## Player/ Parent Expectations (continue)

- Try to not wear blinders and do the best to manage expectations
- The process works and is volunteer based
- Join the process and sign up to be an evaluator
- Remember the ‘Bell Curve’ - Teams 4 through 8 are very close in skill
- Encourage your kids to work hard at every skills or scrimmage session





# **GLENLAKE**

## **MINOR HOCKEY CLUB**

**Welcome**

**Mission and Goals of Process**

**Evaluation Process**

**Role of the Age Group Coordinator**

**Player/ Parent Expectations**

**Questions and Answers**